



**CENTRAL  
HAWKE'S BAY**  
DISTRICT COUNCIL

# Workshop

Thursday, 22 May 2025

Council Chamber

28-32 Ruataniwha Street

Waipawa

*Together we thrive! E ora ngātahi ana!*

## WORKSHOP

### File Number:

**Author:** Doug Tate, Chief Executive

**Authoriser:** Doug Tate, Chief Executive

**Attachments:** 1. 22 May 2025 Workshop Slides [↓](#) 

## PUBLIC WORKSHOP

The public workshop covered the following items:

### HBRC Flood Protection Update

Andrew Casely from Hawke's Bay Regional Council attended the workshop and presented an update on the Flood Protection Works programme carried out across Hawke's Bay, with a specific focus on the two key projects in Central Hawke's Bay: The Waipawa and Pōrangahau Flood Protection Upgrades.

### Structure Plan: Waipukurau South Growth Precinct

The purpose of the session was to share feedback received during early engagement on the structure plan and to outline the next steps for the plan change, including further community engagement that was planned for early June.

### Presentation on the Kaikōra Seed Dryer - Report Stage 1

The purpose of the session was for Nick Pyke (report author, Leftfield Innovation Ltd) to present findings from the completed Stage 1 report, '*Potential for Annual Crops Suited to Floor Drying in CHB*'. The Leftfield Innovation Ltd Stage 1 report had been uploaded to councillor portals as pre-reading.

## PUBLIC EXCLUDED WORKSHOP

### Resource Consents/Development Update

This item gave the Committee an overview of recent and upcoming resource consents and development activity in the district. The primary reason this item was discussed in public-excluded session related to the commercial sensitivity of potential developments, noting that the discussion included consents not yet applied for, to which normal LGOIMA provisions would otherwise apply.

#### *Reason for Public Excluded:*

- s7(2)(g) maintain legal professional privilege and
- s7(2)(b)(iii) the withholding of the information is necessary to protect information where the making available of the information would be likely unreasonably to prejudice the commercial position of the person who supplied or who is the subject of the information.

# Workshop

22 May 2025



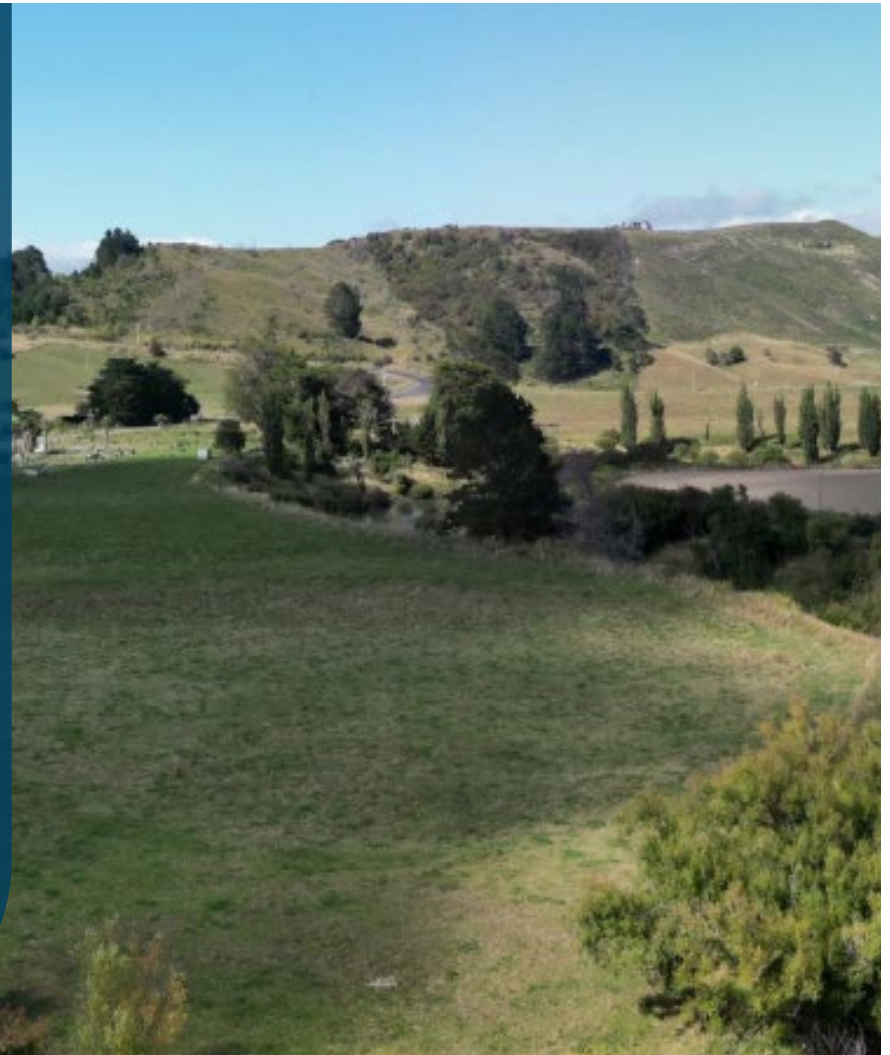
*Together we thrive!*



# Presentation on the North Island Weather Events (NIWE) – HBRC Risk Mitigation Projects

Prepared for Central Hawkes Bay District Council  
22<sup>nd</sup> May 2025

Andrew Caseley – Manager Regional Projects / Programme Director  
Thomas Petrie – Senior Project Manager  
Ellen Atkins – Project Manager



# Contents

- HBRC NIWE Programme Overview
- HBRC NIWE Projects in Central Hawkes Bay District Council Area
  - Pōrangahau Flood Mitigation
  - Rapid Repairs Levels of Service (Waipawa and Coronation Park)
  - Central Hawke's Bay Gravel Extraction

# NIWE Programme Overview

11 Projects in Total (Crown Funding Agreement Programme Sum - \$254m)

Pōrangahau (\$14.6m)	Pākōwhai (\$50m)
Ōhiti / Omāhu (\$10m)	Waiohiki (\$10m)
Whirinaki (\$23m)	Wairoa (\$70m)
Havelock North (\$10m - being delivered by HDC)	Pump Station Upgrade (\$30m)
Telemetry (\$5m)	Scheme Reviews (\$4m)
Stopbank Levels of Service (\$30m)	

All Project Delivery Plans have been approved by Ministers

# Pōrangahau – Estimated Construction Value \$8M

- Project objective is to put in place work to move 79 properties from Cat 2C to Cat 1
- Features of work are stopbanks wherever possible and flood walls in confined areas (sheet piling and concrete/wooden walls) - very challenging alignment
- Land access now commenced
- Design process well advanced
- Tender to market planned for July 2025
- Construction commencement planned for November 2025 with completion by December 2026
- Some house raising and bunding of the Rongomaraeroa Marae as well as Urupa protection



# Rapid Repairs Level of Service – Waipawa/Coronation Park

→ Objective is to -

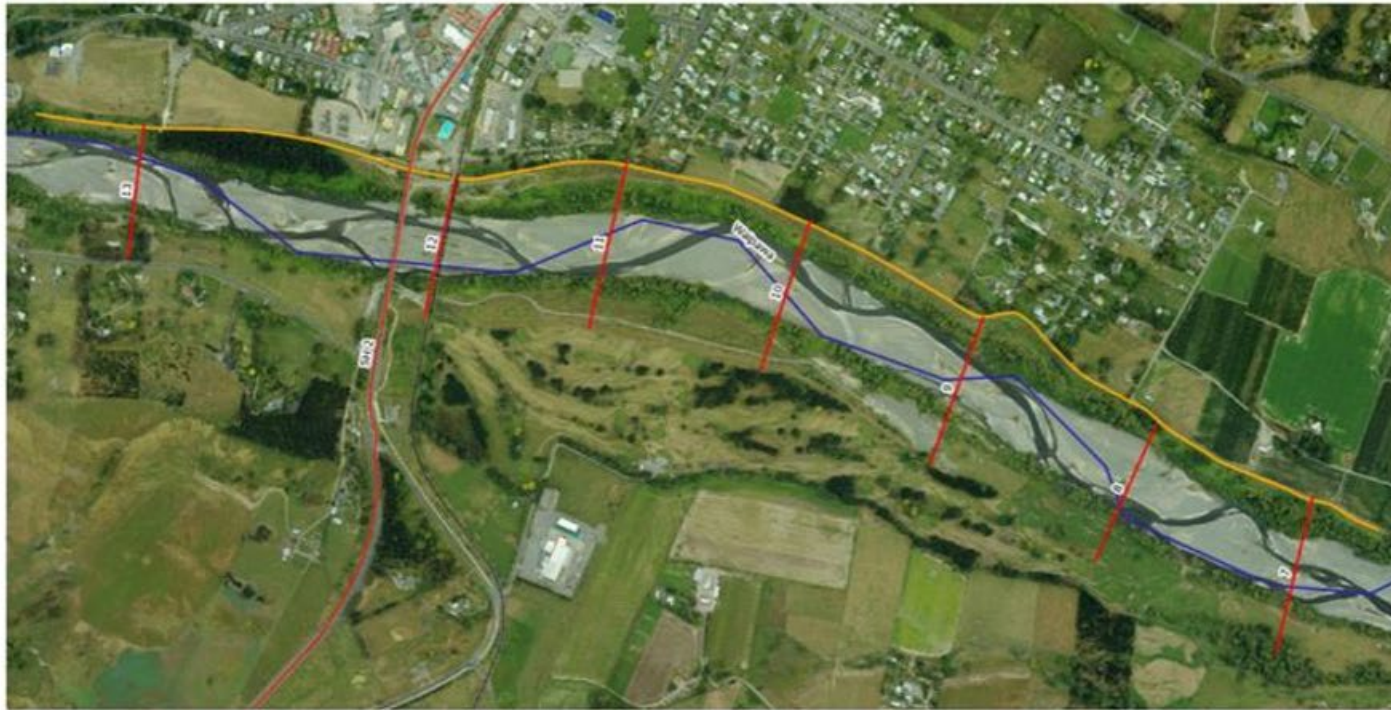
- Increase stopbank heights from Coronation Park to the end of the stopbank to meet a 1% AEP, post Gabrielle plus 700mm freeboard
- Ensure riverside batters are 2.5 H: 1V
- Ensure vehicle access ramps are appropriately built to negate erosion/overtopping

→ Will also –

- Maximise use of gravel in the river adjacent and near to the stopbanks
- Work closely with CHBDC on key stormwater outlets to the river



# Area for level-of-service improvements



# Cyclone Gabrielle Waipawa township flood inundation



# Indicative Project Timing

Concept	Complete by July 2025
Engagement	Throughout project duration
Design	Complete by October 2025
Consents	Secure by October 2025
Procurement	Commence October 2025
Construction	Commence Q4 2025 / Complete by April 2026



# Other

- HBRCs telemetry system is undergoing a major resilience upgrade with work to be completed by end of 2026 – approx. 40 sites are being upgraded with
- Multiple drainage and smaller flood control scheme reviews are planned over the next six months including Upper Makara, Pōrangahau and will involve ongoing community engagement.



# Gravel volumes extracted to date

- The gravel extraction programme was co-funded \$8M by Kanoa and Hawke's Bay Regional Council
- Original gravel volume to be extracted under IRG was to be 800,000m<sup>3</sup>
- 882,139m<sup>3</sup> has already been extracted from the 5 Rivers from Upper Tukituki catchment in Central Hawke's Bay.
- Programme reaches completion 30<sup>th</sup> June 2025.





# Gravel extraction/tranche 6

Final Tranche



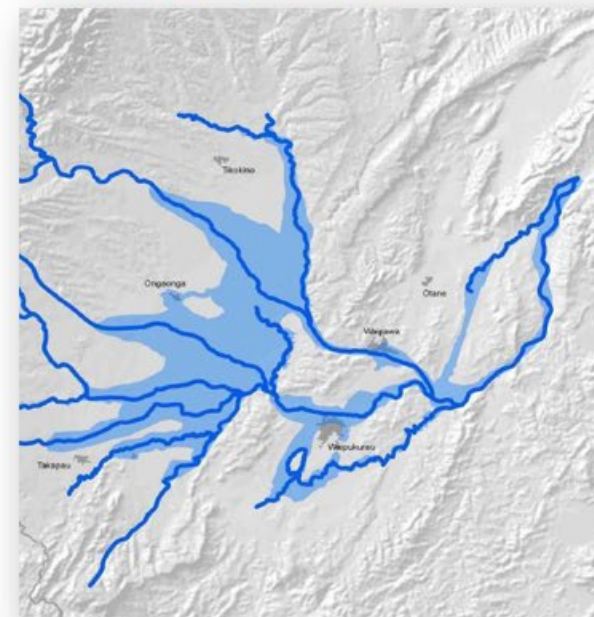
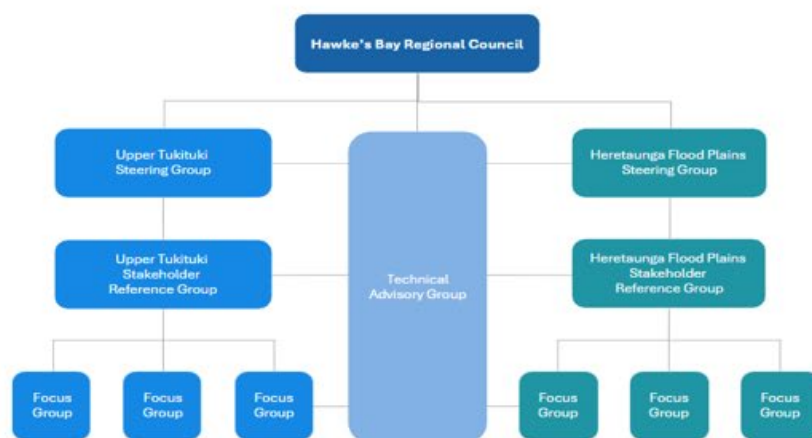
IRG Tranche 6 Waipawa and Upper Tukituki

River	Cross section	Approximate Availability (m³)
Upper Tukituki (UTT)	1	10,000
	2	45,000
	3	30,000
	5	25,000
	6	30,000
	9	15,000
	10	30,000
	11	25,000
Waipawa (WP)	1	10,000
	10	10,000
	11	15,000
	13	13,000
	20	15,000
	22	30,000
	23	25,000
Totals volume (m³)		328,000

# Reimagining Flood Resilience Project - Upper Tukituki & Heretaunga Plains Scheme Reviews :

Update to presentation given to CHBDC workshop 30 October 2024

Proposed structure: Steering Group for UTT includes two representatives from HBRC, CHBDC and relevant PSGE (TPW)



# Project timeline

Project Phase	Timeframe
<b>Phase 1:</b> Project Design ( <i>current phase</i> )	September 2024 – June 2025
<b>Phase 2a:</b> Community socialisation	February 2025 – June 2026
<b>Phase 2b:</b> Stakeholder Reference Groups	July 2025 – December 2025
<b>Phase 3:</b> Long-term Plan preparation and consultation	June 2026 – June 2027 ( <i>HBRC LTP</i> )
<b>Phase 5:</b> Implementation Programme	July 2027 onwards

Working closely with IPMO to ensure alignment with- other community engagement occurring in CHBDC to ensure consistence and connectivity between projects. Also working closely with CHBDC staff and CHBDC representative on the project TAG.

# Stay Informed

Go to [hbrc.govt.nz](https://hbrc.govt.nz) for:

- Latest updates
- Project team and contact information
- Previous newsletters
- Frequently Asked Questions (FAQs)

## Need help?



Email: [project.enquiries@hbrc.govt.nz](mailto:project.enquiries@hbrc.govt.nz)

Sign up to **newsletters**, get regular **project updates**



Send **pātai** to  
[project.enquiries@hbrc.govt.nz](mailto:project.enquiries@hbrc.govt.nz)

# Ngā mihi

Andrew Caseley – Manager Regional Projects / Programme Director  
Thomas Petrie – Senior Project Manager  
Ellen Atkins – Project Manager





# Structure Plan: Waipukurau South Growth Precinct

*22 May 2025*



*Together we thrive!*

# Purpose

- Share feedback from landowner meeting last week
- Discuss matters raised on structure plan
- Upcoming engagements



CENTRAL  
HAWKE'S BAY

*Together*



## Landowner meeting

- Questions were raised on the detail
- No specific concerns or red flags
- Positive feedback on the constructed ponds

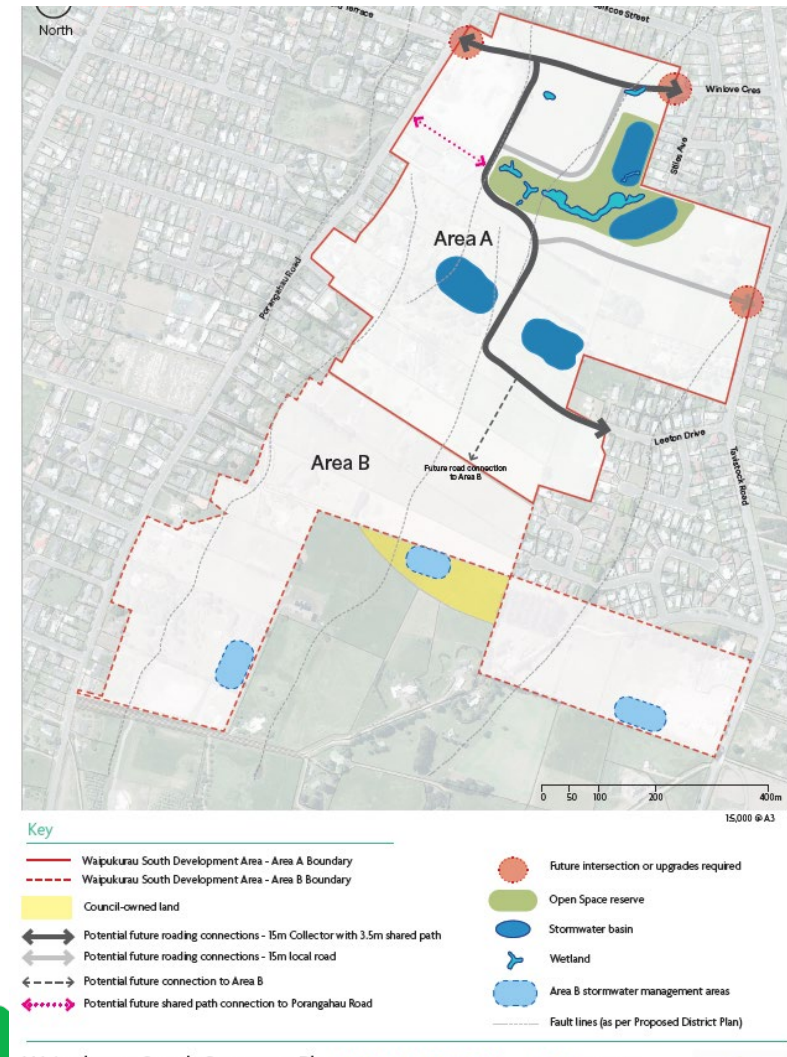


CENTRAL  
HAWKE'S BAY

*Together*

## Development that reflects smart growth

- New chapter now being drafted
- Quality of housing - opportunities within the provisions for urban design standards
- Low density development. 500m<sup>2</sup> lot sizes with opportunities for duplexes in areas close to town centre
- Cultural report - opportunity for Māori design elements and storytelling in public spaces
- Road layouts requiring connectivity, limited use of cul-de sacs
- Road design – street trees and shared path
- Area A and Area B



## Further community engagement

- Opportunity for structure plan feedback at planting day  
<https://www.youtube.com/watch?v=atVKAjVQ9B4>
- Interactive website for feedback
- Aiming for 7 August Council meeting to adopt plan change
- Formal submissions to follow



CENTRAL  
HAWKE'S BAY

*Together*



# Kaikora Seed Dryer Activation Plan - Leftfield Innovation Ltd research

*22 May 2025*



*Together we thrive!*

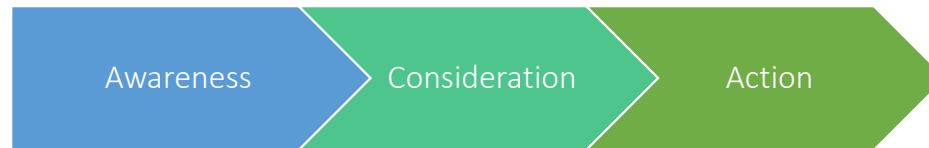


## Background

- In 2023 Kānoa Regional Economic Development & Investment unit - granted co funding of \$500,000 to Kaikora Enterprises Ltd via CHBDC to build the Kaikora Seed Drying facility in Ōtane.
- Completed in December 2023.
- Kānoa also granted \$135,000 to CHBDC for an Activation Plan to support & promote the dryer for local & regional benefit.

## Activation Plan goals:

- Land Use Optimisation
- Pathway:



- Maximise impact from the investment
- Grow local & regional benefit
- Identify & pursue opportunities to leverage the facility for growth



CENTRAL  
HAWKE'S BAY

*Together*

## The Activation Plan:

- 2024 - 2026
- Promote the facility via a comms plan
- Initiate Research
- Develop resources
- Support landowners
- Pursue opportunities
- Support the expansion
- Develop an investment prospectus & provenance brand identity
- Seek funding



CENTRAL  
HAWKE'S BAY

*Together*



## Leftfield Innovation Ltd – Nick Pyke

- Research contract:
- Stage 1: Potential for annual crops suited to floor drying in CHB (complete)
- Stage 2: Further explore opportunities for crops & infrastructure (Due September)



CENTRAL  
HAWKE'S BAY

*Together*





## Introducing Nick Pyke:

- A Founder and Director of Ag Innovate Ltd and Leftfield Innovation Ltd.
- AgInnovate focusses on supporting innovation through high quality applied research and deliver benefits to New Zealand food producers and the agricultural industries.
- Leftfield Innovation uses market insights to develop diversified sustainable land uses delivering food for consumers.
- Nick has governance experience with agricultural businesses, farms, industry good organisations and a sports organisation and is currently Chair of AGMARDT, a director of Cropmark Seeds, Pāmu and FoodHQ.
- He was CEO of FAR (Foundation for Arable Research) from its inception for over 20 years. He has held positions on a number of national advisory groups and is the recipient of a number of awards recognising his contribution to agriculture.



CENTRAL  
HAWKE'S BAY

*Together*

