

# Environmental and Sustainability Strategy Statement of Proposal February 2019

CENTRAL HAWKE'S BAY DISTRICT COUNCIL





## Background

To deliver on its commitments made in the 2018-21 Long Term Plan and based on the views of our local communities captured through Project THRIVE, Council has for the first time created an Environmental and Sustainability Strategy (the Strategy). The Strategy was developed alongside the community with the support of a community reference group as well as some external and expert help.

At its heart, the Strategy has four primary objectives or priorities and four supporting themes that set out how Council will act to work towards the priorities. The four priorities are:

- Managing our impact on waterways
- Increasing recycling and reducing waste to landfill
- Conserving water
- Managing for climate change

To support these priorities, the Strategy contains an assessment of the current state and some actions to be taken under four themes:



The Strategy effects everyone and will set the direction for Council with regard to how it manages its impact on the environment for years to come. The Strategy is also designed to pave the way for initiatives where Council works with community. In accordance with s82 of the Local Government Act 2002, this Statement of Proposal initiates a consultation that is being run in conjunction with the Consultation on the Annual Plan. Council is seeking the community's views on the proposed changes. The full proposed Environmental and Sustainability Strategy is included with this Statement of Proposal.

# The Strategy on a Page

## Themes, Outcomes and Action:

### Leading the way in environmental sustainability

The outcome	Actions for 2019/20 <span>NEW!</span>	Who is responsible?
We are a good example to the rest of New Zealand, leading the way in environmentally friendly and sustainable business practices	Obtain membership on a Sustainable Business Network, complete an audit and plan to reduce Council's emissions and build sustainability into purchasing decisions	Central Hawke's Bay District Council and community
The outcome	Actions for 2019/20 <span>NEW!</span>	Who is responsible?
We continue to demonstrate leadership in environmental and sustainability matters locally and on the national stage	Formally establish the Community Environmental and Sustainability Reference Group	Central Hawke's Bay District Council and Community Environmental and Sustainability Reference Group
	Actions for 2020-23 <span>NEW!</span>	Who is responsible?
	Council monitors and reports on the progress made in the Environmental and Sustainability Strategy	Central Hawke's Bay District Council

### Ensuring environmental vitality through our way of working

The outcome	Actions for 2019/20	Who is responsible?
We will successfully meet our legal obligations	Complete Review of District Plan	Central Hawke's Bay District Council
	Investigate long term water supply storage solution	Central Hawke's Bay District Council
	Implement the Solid Waste Management and Minimisation Plan	Central Hawke's Bay District Council and community
	Continue investment in infrastructure to meet resource consent conditions, specifically those related to discharges to waterways	Central Hawke's Bay District Council
	Council where possible will continue to seek external funding to support various environmental and sustainability initiatives	Central Hawke's Bay District Council
The outcome	Actions for 2019/20	Who is responsible?
We will do more than meet compliance. We will work in a way that ensures environmental vitality – our environment is strong, lively and healthy	Council and the Tuki Tuki Water Task Force will continue to work together with Regional and Central Government on a sustainable water retention solution for the community	Central Hawke's Bay District Council, Tuki Tuki Water Task Force, Hawke's Bay Regional Council and Central Government
	Continue to improve water supply infrastructure to reduce leakage and waste	Central Hawke's Bay District Council
	Proactively work towards meeting resource consent conditions by monitoring and addressing issues as they arise	Central Hawke's Bay District Council
	Support Hawke's Bay Biodiversity Strategy and Action Plan	Central Hawke's Bay District Council
The outcome	Actions 2020/21 <span>NEW!</span>	Who is responsible?
We will monitor our progress towards environmental vitality and develop a plan for action	Undertake State of Environment Report and report back to Council and Community	Central Hawke's Bay District Council, Hawke's Bay Regional Council
	Develop a State of the Environment Action Plan	Central Hawke's Bay District Council, Hawke's Bay Regional Council, Community Environmental and Sustainability Reference Group

### Connecting our people and place

The outcome	Actions for 2019/20	Who is responsible?
We are aware of our unique natural environment and how to care for it	Provide readily accessible information about environmental sustainability	Central Hawke's Bay District Council
The outcome	Actions for 2019/20	Who is responsible?
We are in partnerships with organisations and individuals that can help us be successful environmental guardians	Continue to provide support and resources for the Hawke's Bay Biodiversity Strategy and Action Plan – to protect, stabilise and enhance biodiversity. Signatory to the Biodiversity Accord	Central Hawke's Bay District Council
	Complete Village Planning to identify projects of interest and plan to complete	Central Hawke's Bay District Council and community

### Building a sustainable economy

The outcome	Actions for 2019/2020 <span>NEW!</span>	Who is responsible?
We attract business that our natural environment can sustain	Complete Economic Development Assessment to determine opportunities sustained by our natural environment	Central Hawke's Bay District Council
The outcome	Actions for 2019/2020 <span>NEW!</span>	Who is responsible?
We encourage businesses to operate sustainably	Develop an Economic Development Strategy incorporating sustainable development	Central Hawke's Bay District Council
	Provide and facilitate access to information about sustainable business practices	Central Hawke's Bay District Council and Sustainable Living Aotearoa
	Encourage businesses to practice end of life product stewardship	Central Hawke's Bay District Council, Sustainable Living Aotearoa

## The Submission Process

The proposal contained in this document along with the full Environmental and Sustainability Strategy is open for public submission in conjunction with consultation on the Annual Plan from 18 March to 12 April 2019. This is your opportunity to let the Mayor and Councillors understand your views about the Strategy.

Your submission can be sent to Council by:

- Sending an email to [thrive@chbdc.govt.nz](mailto:thrive@chbdc.govt.nz)
- Completing the online submission form
- Completing the submission form at the end of the Annual Plan Consultation Document and delivering it to:

Central Hawke's Bay District Council

28-32 Ruataniwha Street

Waipawa 4210

Or mailing it to:

Central Hawke's Bay District Council

PO Box 127

Waipawa 4240

Once the public consultation period has concluded, Council will schedule hearings on the proposed Strategy as part of the Annual Plan Consultation. Submitters will be advised of the hearing dates, and those who have indicated that they wish to present their views in person will be advised of their allocated speaking time. Council will consider all submissions received and submitters will be advised of the outcome of their submission as part of the Annual Plan submission process. As provided by section 82(1)(d) of the Local Government Act, you may present your views in a manner that best suits your preferences and therefore is not limited to speaking to a written submission. You can also present your views to the Council verbally at the hearings on the proposal. Please complete an Annual Plan submission form stating if this is your preference.





**CENTRAL  
HAWKE'S BAY**  
DISTRICT COUNCIL

*together we thrive*

# Environmental and Sustainability Strategy

2019-23

Successful  
environmental  
guardians, ensuring  
future generations  
**THRIVE** here.



January 2019



# Contents

**Page 4**  
Introduction

**Page 5**  
**One**  
Leading the way  
in environmental  
sustainability

**Page 6**  
**Two**  
Ensuring  
environmental  
vitality through our  
way of working

**Page 7**  
**Three**  
Connecting our  
people and place

**Page 8**  
**Four**  
Building a more  
sustainable  
economy

**Page 9**  
What do we  
need to do?

**Page 10**  
Monitoring  
and evaluation





Together we are:  
"Successful environmental  
guardians, ensuring future  
generations THRIVE here"



# Introduction

Our people cherish the unique and beautiful landscape of the Central Hawke's Bay. Project THRIVE reaffirmed that great value is placed on our natural environment, ensuring that it is healthy and can sustain future generations is important to our community.

**Together we are: "Successful environmental guardians, ensuring future generations THRIVE here".**

The Strategy has been developed to reduce Central Hawke's Bays' environmental footprint and to protect and enhance the environment so that it can sustain future generations. Council has been undertaking research, working alongside the Community Environmental and Sustainability Reference Group and developing ideas gathered in Project THRIVE to identify a vision for the future. By 2023 Central Hawke's Bay community will be recognised as successful environmental guardians, protecting and enhancing the environment so that future generations can THRIVE here. Protecting the environment and acting sustainably means many things to Council and to the community, among these as top priorities are;

- Managing our impact on waterways
- Increasing recycling and reducing waste to landfill
- Conserving water
- Managing for climate change

Council recognises that no single organisation can bring about a healthy environment on its own.

We take our responsibility seriously and have pledged to work alongside others to reduce the environmental footprint of the District. We are a small, practical and agile community, grounded in practicality and buoyed by knowing what can be achieved by working together. Our future is bright and thriving, because we choose to make it so.

The Strategy is broken into four key themes that were identified through working with our community in Project THRIVE and through an established reference group for the Strategy. Each theme includes an assessment of where we are now and where we are going and in the back of the Strategy is a table of actions to help us, and our community, bridge the gap.







## Leading the way in environmental sustainability

### Where are we now?

During Project THRIVE our community told us they would like Central Hawke's Bay to be a good example to the rest of New Zealand, leading the way in clean environmental and sustainability practices. Council has a specific role in providing local leadership and decision making, the community also has a local leadership role to play. Council is looking forward to working with community leaders on the Environmental and Sustainability Reference Group to consider how our community can lead the way and be a role model to the rest of New Zealand. We have a number of environmental challenges to face - one of most the significant being the impacts of climate change.

### Where do we want to be?

We are a good example to the rest of New Zealand, leading the way in environmentally friendly and sustainable business practices. Council believes that good role models actively demonstrate desired behaviour. It is important to us that we are leading the way and putting our policy into practice by actively work towards reducing our own carbon footprint here at Central Hawke's Bay District Council. We have much to learn. We intend to join a Sustainable Business Network for support and advice and embark upon an audit that will assist us to reduce our greenhouse gas emissions and build sustainability into our purchasing decisions.

We expect our audit findings will increase Council's understanding of sustainable business practices and influence the way we work with other businesses. We may have more stringent expectations about our suppliers taking end of life product stewardship and recycling and reducing their own emissions and environmental footprint.

We continue to demonstrate leadership in environmental and sustainability matters locally and on the national stage. Council will continue to carry out our leadership responsibilities as per the Local Government Act by incorporating environmental wellbeing and sustainability into decision making .

Leading at the local level will require Council to understand some of the likely impacts global environmental issues will have on our community. We will work with our community to develop local solutions. For example, adapting to and mitigating the impacts of climate change are significant challenges and a new priority focus for all Councils. We know that reducing emissions will help mitigate the effects of climate change.

Our whole community will have a part to play in meeting New Zealand's emission reduction targets to by 2050. While work is underway at a national level to develop emission reduction action plan it will be important that local solutions are developed for local communities. Farming and food production are at the heart of our local economy and these industries are some of the biggest contributors to emissions. We are committed to working with Central Government and participating in climate change projects it is equally important to us that we work alongside our Community Environmental and Sustainability Reference Group and involve our community in developing local solutions.



# Two

## Ensuring environmental vitality through our way of working



### Where are we now?

Protecting the natural environment is Council's core business and is not something considered discretionary. We are legally required to supply water, manage waste and land resources to meet strict requirements under the Resource Management Act as stipulated in conditions of the numerous Resource Consents held by Council. While legal compliance is critically important, Council and our community recognise together that much more can be done.

### Where do we want to be?

We will successfully meet our legal obligations. Council activity is largely bound by legislation. New ways of addressing environmental challenges mean that legal requirements are subject to change, requiring Council's to respond to new requirements and resources. For smaller Council's like Central Hawke's Bay, just meeting legal requirements requires careful balancing of very limited resources. We allocate resources according to priority. Our priorities for the next 5 years will be on ensuring legal requirements are met by:

- Upgrading wastewater treatment plants to meet resource consent conditions
- Investigating long term water storage solutions
- Implementing the Solid Waste Management and Minimisation Plan

We will do more than meet compliance. We will work in a way that ensures environmental vitality - our environment is strong, lively and healthy. Council has some flexibility about the way it meets legal compliance requirements. The priorities and preferences of the local community to protect natural environment can be reflected in choices and decision making. Often these choices do not require additional resources but a change in focus on a different way of working.

To reflect our way of working we will ensure that:

- We work alongside our community to investigate sustainable water storage solutions
- Our water supply infrastructure is well maintained and reduces leakage and waste



- We exceed expectations for recycling and reducing waste as outlined in the Solid Waste Management and Minimisation Plan
- We proactively work towards meeting consent conditions by monitoring and addressing issues if they arise.

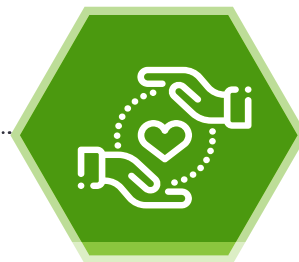
We will monitor our progress towards environmental vitality and develop a plan for action. Good data and information are key to determining how healthy our environment really is. It also provides an evidence base to help distinguish between perception and reality and a guide for action. Council will complete the State of the Environment reporting. Renewed focus will be placed on establishing a core set of environmental indicators that will tell us how healthy our environment is. We will take available information and build upon it, adding a set of local environmental indicators. The State of the Environment Report will be shared in the community to raise awareness of how well we are doing and to develop an action plan and local solutions for addressing issues.





# Three

## Connecting our people and place



### Where are we now?

During Project THRIVE our people told us how special our place is. Our home here in Central Hawke's Bay has a unique and beautiful natural landscape, different from anywhere else in the world. The land, native bush, biodiversity, mountains, river, beaches and sea are natural treasures, our taonga to be valued and cherished. However, our community also identified some challenges that were holding us back from THRIVING. Council is committed to working in partnership with others to raise awareness about our special place to ensure our people know how they can take action and play a part in caring for the natural environment.

### Where do we want to be?

We are aware of our unique natural environment and how to care for it. We will encourage community organisations to raise awareness of what makes Central Hawke's Bay landscape special and unique. Whenua is a term that can be used to describe a view point about land, that land is more than just a resource, or something to be owned but an anchor point to create experience and meaning. Whenua can enhance a sense of belonging and connection to a place and increase the likelihood that people will care for it.

We want our community to readily access information they need to live in an environmentally friendly and sustainable way. One of the ways Council can assist the community in this aim is to become a member of Sustainable Living Aotearoa. This is a national organisation that provides the Future Living Skills programme and includes information and suggested actions to the community about living more sustainably.

Website information about energy savings, sustainable buildings, water, food, transport, growing organic vegetables, waste and building resilience is kept up to date by specialist experts.

We are in partnerships with organisations and individuals that can help us be successful environmental guardians.

Central Hawke's Bay District Council is a signatory on the Hawke's Bay Biodiversity Accord. Our signature represents our continued support of the Hawke's Bay Regional Council and partners to implement the actions in the Biodiversity Strategy.

We intend to work alongside landowners, Community Environment and Sustainability Reference Group and biodiversity specialists at Hawke's Regional Council to protect and enhance sites of significance in the district. Our work will complement the recently completed Biodiversity Inventory and help prioritise effort where it is needed most.

Council recognises that Central Hawke's Bay is made of towns and villages each with its unique set of characteristics. It is important to Council that local issues are addressed by local solutions, rather than a one size fits all approach. In 2019/20 Council will embark upon Village Planning exercises where local villages will get to identify their own vision for the future, local issues and set of actions. We look forward to working with communities to address environmental issues identified for each village.



# Four

## Building a sustainable economy



### Where are we now?

Council has become more active in Economic Development, recently appointing its first Economic Development Officer and planning to develop an Economic Development Strategy. To inform the Strategy, Council is currently undertaking research to identify the types of businesses that our natural assets and environment can sustain.

### Where do we want to be?

We attract business that our natural environment can sustain. We know that climate change will impact upon our community and affect what we can produce here. Already water storage is a concern for our community. To prepare for further change it is important that we have good data and information to base decisions on. Council is undertaking an Economic Development Opportunities Assessment to identify the economic development opportunities for the Central Hawke's Bay. The study will consider the District's economic advantages and high productivity assets and attributes including quality agricultural land, natural resources, temperate climate, climate change, central location, and an excellent transport network, including the Napier Port. The aim is to undertake location specific research and make practical recommendations about profitable and sustainable, innovative business initiatives that will grow and diversify the local economy, increase overall productivity, business investment, and jobs.

It is thought the study will include a range of practical solutions and recommendations that may include, for example, alternative land use options. The information will be used for a range of different purposes including the development of investment prospectus to attract businesses to Central Hawke's Bay.

We encourage businesses to operate sustainably. We want to encourage local businesses to practice as sustainably as possible. Providing and facilitating access to businesses seeking information is a role that Council can provide through a range of sources including, Ministry for the Environment and Sustainable Living Aotearoa. Council has also allocated resources to encourage and enable local businesses to work with a Sustainable Business Network. This will involve undergoing business audits to reduce greenhouse gas emissions and build sustainability into purchasing decisions. For example, choosing suppliers, producers, brand owners, importers, that practice product stewardship by accepting responsibility for reducing a product's environmental impact throughout its life.





# What we need to do?

Leading the way in environmental sustainability		
Outcome	Actions 2019/20	Responsible
We are a good example to the rest of New Zealand, leading the way in environmentally friendly and sustainable business practices	Obtain membership on a Sustainable Business Network, complete an audit and plan to reduce Council's emissions and build sustainability into purchasing decisions	Central Hawke's Bay District Council and community
Outcome	Actions 2019/20	Responsible
We continue to demonstrate leadership in environmental and sustainability matters locally and on the national stage	Formally establish the Community Environmental and Sustainability Reference Group	Central Hawke's Bay District Council and Community Environmental and Sustainability Reference Group
Outcome	Actions 2020 - 23	Responsible
	Council monitors and reports on the progress made in the Environmental and Sustainability Strategy	Central Hawke's Bay District Council
Ensuring environmental vitality through our way of working		
Outcome	Actions 2019/20	Responsible
We will successfully meet our legal obligations	Complete Review of District Plan	Central Hawke's Bay District Council
	Investigate long term water supply storage solution	Central Hawke's Bay District Council
	Implement the Solid Waste Management and Minimisation Plan	Central Hawke's Bay District Council and community
	Continue investment in infrastructure to meet resource consent conditions, specifically those related to discharges to waterways	Central Hawke's Bay District Council
	Council where possible will continue to seek external funding to support various environmental and sustainability initiatives	Central Hawke's Bay District Council
Outcome	Actions 2019/20	Responsible
We will do more than meet compliance. We will work in a way that ensures environmental vitality – our environment is strong, lively and healthy.	Council and the Tuki Tuki Water Task Force will continue to work together with Regional and Central Government on a sustainable water retention solution for the community.	Central Hawke's Bay District Council, Tukituki Water Task Force, Hawke's Bay Regional Council and Central Government
	Continue to improve water supply infrastructure to reduce leakage and waste	Central Hawke's Bay District Council

	Proactively work towards meeting resource consent conditions by monitoring and addressing issues as they arise.	Central Hawke's Bay District Council
	Support Hawke's Bay Biodiversity Strategy and Action Plan	Central Hawke's Bay District Council
Outcome	Actions 2020/21	Responsible
We will monitor our progress towards environmental vitality and develop a plan for action	Undertake State of Environment Report and report back to Council and Community	Central Hawke's Bay District Council, Hawke's Bay Regional Council
	Develop a State of the Environment Action Plan	Central Hawke's Bay District Council, Hawke's Bay Regional Council, Community Environmental and Sustainability Reference Group

## Our People and Place

Outcome	Actions 2019/20	Responsible
We are aware of our unique natural environment and how to care for it	Provide readily accessible information about environmental sustainability.	Central Hawke's Bay District Council
Outcome	Actions 2019/20	Responsible
We are in partnerships with organisations and individuals that can help us be successful environmental guardians	Continue to provide support and resources for the Hawke's Bay Biodiversity Strategy and Action Plan – to protect, stabilise and enhance biodiversity. Signatory to the Biodiversity Accord.	Central Hawke's Bay District Council
	Complete Village Planning to identify projects of interest and plan to complete	Central Hawke's Bay District Council and community

## Building a sustainable economy

Outcome	Actions 2019/2020	Responsible
We attract business that our natural environment can sustain	Complete Economic Development Assessment to determine opportunities sustained by our natural environment	Central Hawke's Bay District Council
We encourage businesses to operate sustainably	Develop an Economic Development Strategy incorporating sustainable development	Central Hawke's Bay District Council
	Provide and facilitate access to information about sustainable business practices	Central Hawke's Bay District Council and Sustainable Living Aotearoa
	Encourage businesses to practice end of life product stewardship	Central Hawke's Bay District Council, Sustainable Living Aotearoa

■ Indicate new actions.  
All others are existing actions.





# Monitoring and evaluation

We will measure our results to ensure we are undertaking actions and achieving the outcomes and vision we seek.

We have identified the following potential measures to help assess our progress against the four themes. Our measures will also help to tell us if we need to stop doing an action and change course, as well as when we should celebrate success. These measures reflect that we are at the beginning of become more environmentally sustainable. As we become more experienced and gather more information our measures will change and become more specific.

We want the actions in the Strategy to bring about real change, as well as understand what works and what does not. It is important to recognise that some measures are influenced by things out of our control.

## Leading the way in environmental sustainability

- Being a good example to the rest of New Zealand, leading the way in environmentally friendly and sustainable business practices
- We continue to demonstrate leadership in environmental and sustainability matters locally and on the national stage

*Report against implementation of initiated Sustainable Business Network audit recommendations*

*Report against progress on themes and actions in the Environmental and Sustainability Strategy*

## Ensuring environmental vitality through our way of working

- Meeting legal obligations
- Doing more than meet compliance. We will work in a way that ensures environmental vitality – our environment is strong, lively and healthy
- We will monitor our progress towards environmental vitality and develop a plan for action

*Report against legal obligations*

*Environmental Health Indicators (State of the Environment Report)*

*Report against implementation of initiated in the State of the Environment Action Plan*

## Connecting our people and place

- Raising awareness of our unique natural environment and how to care for it
- We are in partnerships with organisations and individuals that can help us be successful environmental guardians

*Report on outcomes of community education programmes*

*Report against initiated actions in the Hawke's Bay Biodiversity Action Plan*

## Building a sustainable economy

- Attract businesses that our natural environment can sustain
- Supporting businesses to operate sustainably

*Report against outcomes of the Economic Development Opportunities Assessment*

*Report against the actions in the Economic Development Strategy*

